

ATPL

DISTANCE LEARNING



AIM OF THE COURSE:

The objective of the course is to obtain the JAA ATPL(A) via a distance learning method.

DESCRIPTION:

- Text books and DVD
- 15 Days Revision in Brussels
- E-mail support
- ATPL Forum

PRE-ENTRY REQUIREMENTS:

- PPL ICAO

DURATION:

- Minimum 6 months

COURSE FEES:

- € 3199,00 (VAT included)

€ 3199

All quoted hours and prices are based on the minimum requirement for license or rating issue. Prices may be subject to change at short notice.



DESCRIPTION



In conjunction with Bristol Groundschool, we have developed a unique distance learning program which will greatly increase your ability to study effectively from home. The course includes a series of full-colour study books and a DVD-ROM. The DVD-ROM contains more than 2500 illustrations and animations to help you understand the subject matter.

The Structure Of The ATPL Course

The ATPL course is carried out by a combination of distance learning and classroom work.

There are fourteen exams to be passed for the JAA ATPL, some more difficult than others. To keep the course manageable the subjects have been split into two Modules:

Module 1 contains

- General Navigation
- Radio Navigation
- Performance
- Principles of Flight
- Flight Planning
- Human Performance & Limitations
- Mass & Balance

Module 2 contains

- Aircraft General Knowledge
- Aviation Law
- Operational Procedures
- Instruments
- Meteorology
- VFR Communications
- IFR Communications

Each Module has a distance learning phase followed by a revision course at Brussels just before the exams.

A particular advantage of distance learning is that you can work at your own rate. Even so, the average student typically takes four to six months to complete the distance learning phase of Module 1.

Once that is complete you join us for one week then take the first set of exams.

After the first exams you study the Module 2 subjects, come to Brussels again for another revision course and then take the remaining papers. Module 2 usually takes about a month less to complete than the first Module.

You can also learn everything at once and come for two weeks revision in Brussels. It is your choice.

During the distance learning phases you are guided carefully through the subjects as you follow a simple training program.

DESCRIPTION

The course includes traditional training manuals integrated with state of the art computer based training and electronic testing. Depending on your preference you can work either from the manuals, or the computer program, or both.

Progress tests are placed at the end of each significant section. The progress tests can either be sent in to us for marking or, if you prefer, you can use the electronic testing facility which automatically sends us the results.

While you are working at home it is very important that you make use of our instructors if you run into problems or have any queries. You can contact us by telephone, post, e-mail or fax. A dedicated internet forum allows you to ask questions on-line.

Integrated Learning System

The ATPL Integrated Learning System consists of the written manuals, the computer program and the on-line resources of the JAA ATPL forum and question bank. The Learning System was designed to combine the best of traditional training methods with state of the art computer training and has a proven success rate far in excess of traditional classroom based training.

The ATPL Manuals

The manuals form a major part of the Learning System. The course is broken down subject by subject and chapter by chapter into easily understood sections supplemented with thousands of diagrams, all produced in house. Bullet points in the margins emphasise important facts.

Progress Tests have been inserted after each major section. They are presented in multi-choice format and the questions are either based on exam feedback or in the style of the JAA exams. Seventy four tests in all need to be completed and returned to us for marking and assessment, these can be completed in hard copy and returned either through the mail or by fax or, alternatively, the tests can be completed on the computer program and results electronically transmitted.

The manuals are printed in full colour on high quality paper. They are presented in four ring loose leaf binders, sometimes one subject a binder, sometimes more. Amendments to the manuals are accessed through the internet by selecting 'Download Page' in the computer program.



DESCRIPTION

The Computer Program

The computer program provided with the course also contains all the text and diagrams you will find in the ATPL manuals. Many of the static diagrams from the manuals are animated to illustrate particular points.

The program also contains a series of longer extra animated training modules and video sequences, holds electronic versions of the progress tests and gives access to the on-line question bank, forum and download page.

Some of the main features of the computerised part of the Integrated Learning System are:

It contains animated diagrams and video sequences to help you understand how various components and systems work.

It allows you quickly to find information on specific topics using the phrase finder.

It tests your knowledge with a series of progress tests and sends your test results back to the school. The progress tests in the Learning System are the same as those contained in the written notes.

It automatically marks and scores the tests you take.

It gives you feedback on wrong answers and allows you to refer directly back to the appropriate section and chapter in the main text.

It tracks and records your responses to questions allowing you to see at a glance which questions you got wrong or hesitated over.

It allows you to compile your own set of abbreviated notes by cutting and pasting selected portions of text from the manual.

It includes an auto-glossary function that allows you quickly to call up definitions of defined terms and expressions.



DESCRIPTION

Computer Based Training

The computer program normally displays text and images side by side. The images refresh automatically as you scroll down through the text. You can choose to view text alone or expand the current image to take a closer look. Most of the images are vector drawn and can be enlarged as much as you wish.

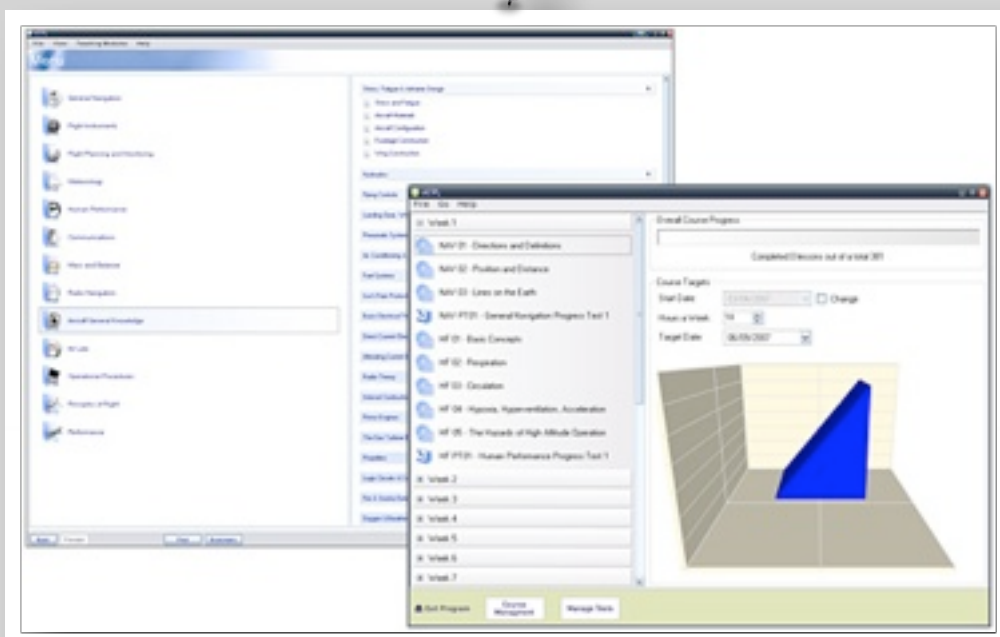
Words highlighted in red are defined terms. When these are clicked with the mouse a pop-up window appears showing the full definition for the word. Additional buttons allow you to bookmark the page for later reference.



Finding a Topic

The program is designed to help you find information quickly and easily. The computer program is divided by subject then by chapter in just the same way as the written manuals. The sub-headings within each chapter divide the program into pages.

The program opens at the Main Contents page which lists the major subject areas on the right with chapter headings and page titles displayed on the left. Click on a page to navigate straight to it.



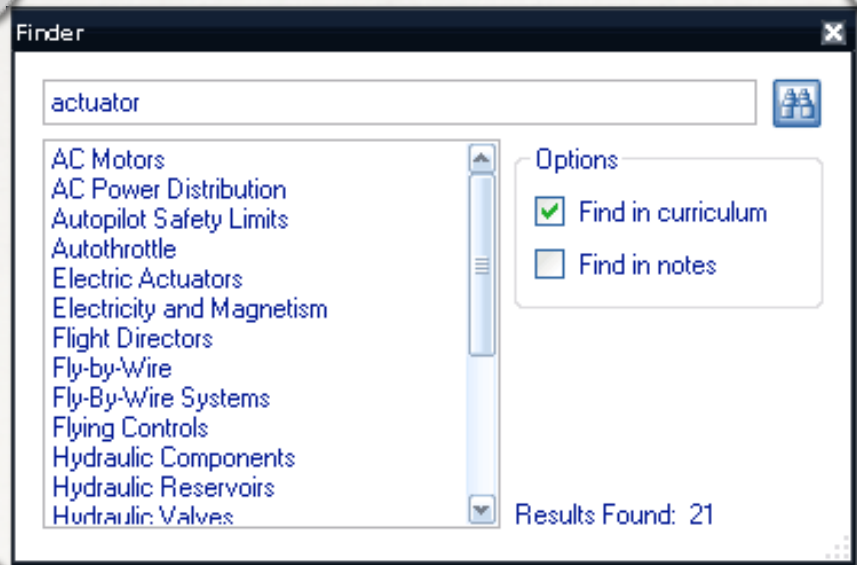
DESCRIPTION

Computer Based Training

The Phrase Finder

If you are not certain which subject and chapter holds the information you case use the phrase finder. From anywhere in the application select 'FIND' on the toolbar, then type in the word or phrase you are looking for. The phrase finder rapidly searches through the entire course and displays the names of every page where the word or phrase occurs.

Click on the page name to jump straight to your selected topic area. If you need to continue the search click 'Find on Page' for every occurrence on that page.



Animations

Hundreds of animations pop up next to the text. More sophisticated animations are effectively three dimensional drawings that can be manipulated with a mouse. A number of separate animated teaching modules are also included, accessible from the main menu.

Heathrow Autoland

This is a fifteen minute animated sequence that shows you the typical autoland indications for an ILS approach to Heathrow in a Boeing 747 equipped with Electronic Flight Instrument Systems (EFIS).

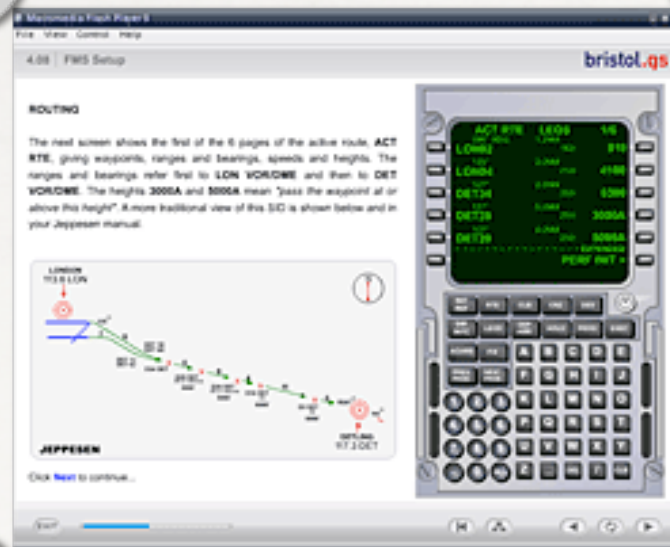


DESCRIPTION

Computer Based Training

A Guide to the FMS

The Guide to the FMS is an interactive introduction to the Flight Management System which takes you through a typical initialisation sequence and gives you an overview of the display and the main FMS facilities.



TCAS Indications

There are two modules illustrating the Traffic Collision Avoidance System (TCAS), one showing displays on an EFIS B737 and one showing an Avro RJ cockpit. Displays, audio alerts and immediate actions are illustrated.

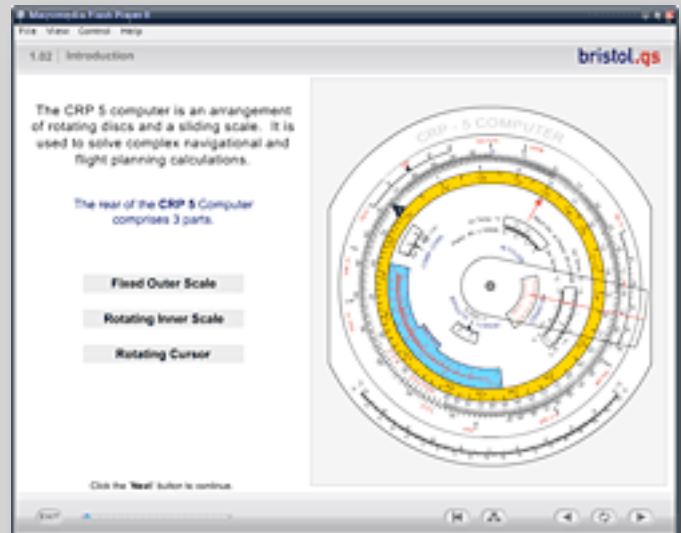


DESCRIPTION

Computer Based Training

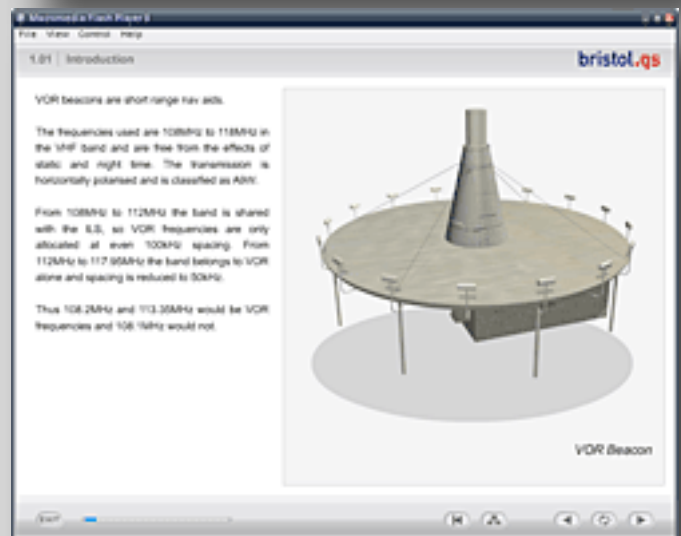
The CRP 5

The Navigation Computer is an essential tool for all ATPL students, particularly in General Navigation, so its vitally important that you understand how to use it. This module comprises a series of animated examples which take you through the most common functions.



VOR Modes

This module explains the general principles behind VOR Beacons and their function.



Gyroscopes

This module explains the general principles behind gyroscopes and their behaviour in relation to the Earth and space.



DESCRIPTION

Computer Based Training

The Visual VOR Trainer

This interactive trainer shows the relationship between aircraft, beacon and instrument indications. This is particularly useful for PPL pilots who have yet to see and use an HSI or RMI or for ex-military pilots who are not familiar with the VOR/ILS indicators used in light aircraft.

Progress Tests

The Progress Tests are controlled through a Personal Course Management System (PCMS) integrated into the program. The PCMS will be central to your studies. The module:

Gives you access to each of the 74 progress tests

Allows you to view at a glance your past performance on test

Displays comprehensive reports on completed tests

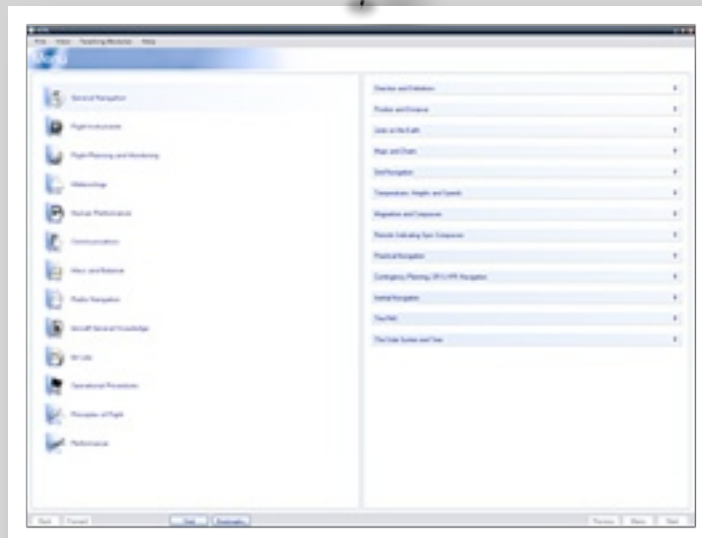
Allows you to print the revision notes you have constructed

Displays lists of problem questions sorted by subject area



The PCMS Main Page

This page is your starting point for all the PCMS functions. As well as processing and reviewing progress tests and notes you can download updates and enhancements to Learning System, update your personal details and manage your results database.



DESCRIPTION

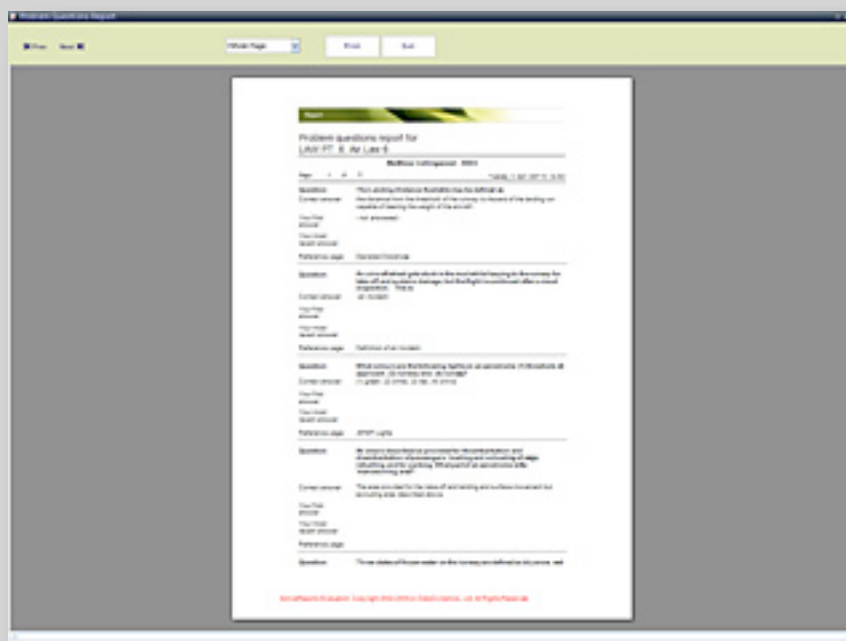
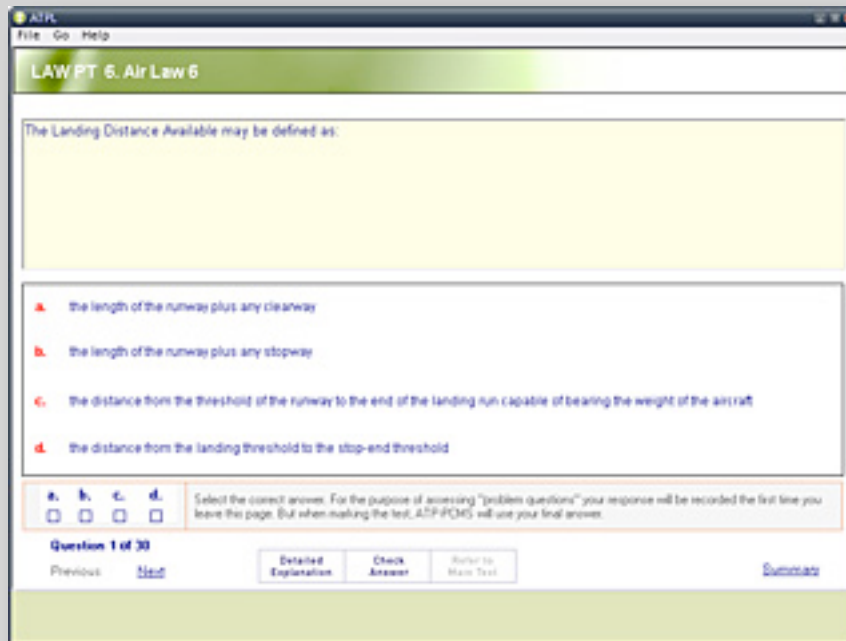
Computer Based Training

Progress Tests

All the Progress Tests in the manuals are repeated in the computer program. The tests can be taken any number of times and the sequence of questions and answers is randomised each time. The first time the test is scored the program stores the result so that you can automatically transmit it to us over the internet.

Test Report

Once the test is scored the learning System identifies which questions you got wrong and produces a written test report that shows each question in turn, the right answer and your answer. Detailed explanations can also be shown on screen and hot links refer you back to the relevant sections of text.



DESCRIPTION

Computer Based Training

Review Problem Questions

The program keeps a record of every question you answered incorrectly or even hesitated over. This allows you to revise specific problem areas and jump directly to the questions you got wrong rather than requiring you to take the whole test again.

Revision Courses

Each module ends with a one-week classroom phase.

These are held several times a year in Brussels.

The classroom phase is very intensive. Much of the time is spent working through practice papers and debriefing your results so there is very little time to cover new material.

To get the best out of the classroom phases you must have completed and thoroughly revised your self-study material.

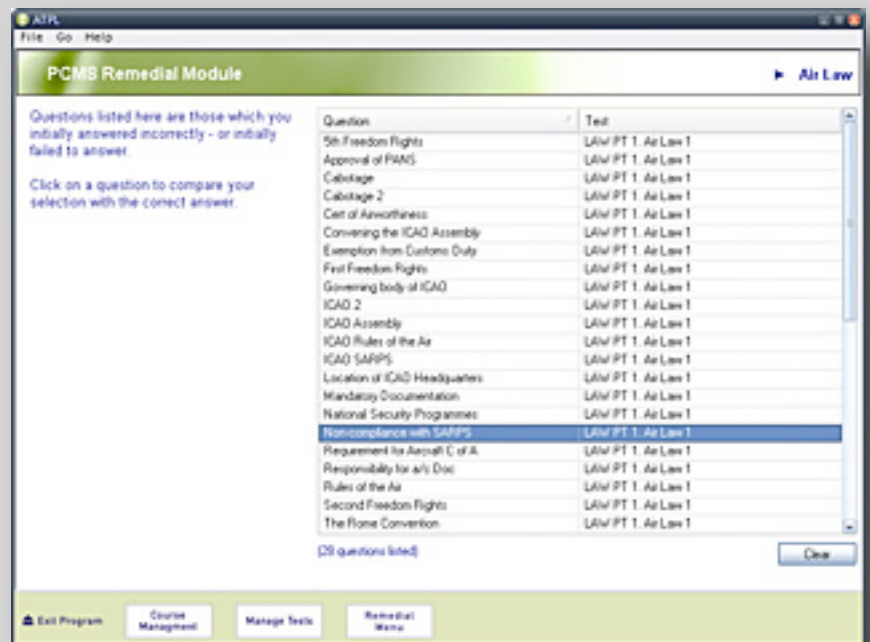
Exams

Exams are performed in the center of Brussels where the Belgian CAA is located. The exams are computer based. So, you just book a computer in advance to the BCAA and you go for it!

No need to wait for yearly exams sessions as it is in many countries.

You have the results immediately and can resit, if necessary, whenever you want.

This will ease the planning of your studies.





Can I start without my PPL license ICAO ?

No, according to the JAR, you must be in a possession of your PPL license.

How long do you support the course ?

18 months after you first log in.

Can I get the material prior having the PPL ?

Yes, but don't forget that you will not be registered as a student until you have your PPL.

Do we need maths ?

Yes but only the elementary maths and physics (secondary school) is enough.

Is the DVD working on MAC OS?

Yes, but with the window emulator. (parallel PC,...)

Can we buy the DVD separately ?

No, it is part of the course.

How many time can we resit in cas of exams failure?

3 times after your first complete attempt.

How long do we have to pass the exams module 2 ?

18 months after the first attempt of module 1.

Can we be refunded if we stop after 1 module ?

No, you are buying the complete course. If not sure, you should by only one module at a time.

Can we pay the module separately ?

Yes, you can buy module one for €1999 and module 2 for €1200. This is a promotional price valid until the 30 june 2010.

Can we join a full time course if we need it ?

Yes, you can always join the ATPL full course for a supplement of € 3000.

What is the pass rate?

Our pass rate is excellent and near 100%. The reason is that we have an excellent follow-up and will allow you to perform the exams if you are not ready.

Can we do the theory ATPL in Belgium and the practical CPL/IR in an other country ?

No, according to JAR, you must always perform the theoretical part associated to the practical in the same country. You can change school but inside the same country.

Is it possible to have course on one to one ?

Yes, the rate will be €50/h.

Do we have acces to the Bristol database online?

Yes, for a little fee, you will have access to simulated exam

Can we start anytime ?

yes, indeed.

**Full
Ground Course is
available for a supplement
of € 3000. Ask us for more
information on how to join the
full course.**

cgi@hubair.be

FINANCING

The cost of a dream.....

ATPL Theory course

€ 3199,00 (VAT included) .



included:

- Text Books,Caps, Jeppesen
- DVD
- 15 days revision ground course in Brussels
- Email support
- Access to the ATPL support forum

Not Included:

- Accommodation in Belgium during revision.
- Transportation in Belgium.
- Access to ATPL on-line question Bank
- BCAA exams fees
- Shipping of the documents
- Meals

Payment scheme

All Package : €3199,00

Module 1: €2399,00

Module 2: €1000,00
(VAT included)

Bank

Fortis/BNP Paribas Bank
BIC/SWIFT:GEBABEBB
Fortis: 267-0118565-50
IBAN BE86 2670 1185 6550

REVISION PERIOD 2012

	MODULE 1	MODULE 2
REVISION 1	16 - 22 Apr.	23 - 29 Apr.
REVISION 2	20 - 26 Aug.	27 Aug. - 2 Sept.

Get Started Now !

Don't hesitate to contact us today in order to get full information on the training. Register by filling up the **online application form** .

E-mail

contact@hubair.be

Phone

+32 2 721 04 25

HUB'AIR

51 Excelsiorlaan
1930 Zaventem
Belgium